

Overview

Water traps protect pressure gauges and shut-off fittings from heating up (e.g. by steam) by the water column produced by the water trap.

The max. working temperature is 120 °C (248 °F) at 100 bar (1450 psi), 300 °C (572 °F) at 80 bar (1160 psi) or 400 °C (752 °F) at 63 bar (914 psi). If the temperature of the measured medium is higher, a sufficiently long line has to be connected up-stream of the trap to enable heat dissipation.

Design

The water traps are available in U shape (type B) or circular shape (type D) to DIN 16282. They have a weld-on end \varnothing 20 mm \times 2.6 mm on the measurement side. The connection on the device side is a clamping sleeve $G\frac{1}{2}$ to DIN 16283.

The water traps are made of steel (P250GH) or stainless steel (X 6 CrNiMoTi 17 12 2)

Water traps are designed as standard for max. operating temperature 120 °C (248 °F) at max. operating pressure 100 bar (1450 psi) (300 °C (572 °F) at 80 bar (1160 psi), 400 °C (752 °F) at 63 bar (914 psi)). Water traps for higher operating pressures and temperatures are available on request.

Selection and Ordering data

Article No.

Water traps

for pressure gauges and pressure transmitters, max. working temperature 120 °C (248 °F), max. working pressure 100 bar (1450 psi) (or 300 °C (572 °F) at 80 bar (1160 psi), or 400 °C (752 °F) at 63 bar (914 psi)), weight 0.7 kg

Water trap B to DIN 16282

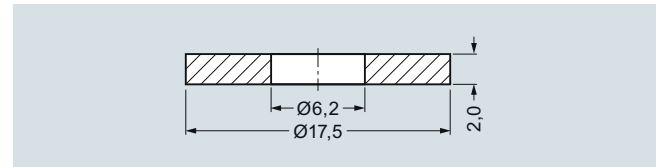
Material	Mat. No.
P235GH	1.0345
X 6 CrNiMoTi 17 12 2	1.4571/316Ti

M56340-A0043**M56340-A0061**
Water trap D to DIN 16282

Material	Mat. No.
P235GH	1.0345
X 6 CrNiMoTi 17 12 2	1.4571/316Ti

M56340-A0045**M56340-A0063**
Overview

The sealing rings to EN 837-1 are required to seal measuring instruments for pressure with the process connection $G\frac{1}{2}B$.

Dimensional drawings


Sealing ring 7MF9007-7A, to EN 837-1, dimensions in mm

Selection and Ordering data

Article No.

Sealing ring to EN 837-1 for thread $G\frac{1}{2}$ made of

(packing unit 100 pcs)

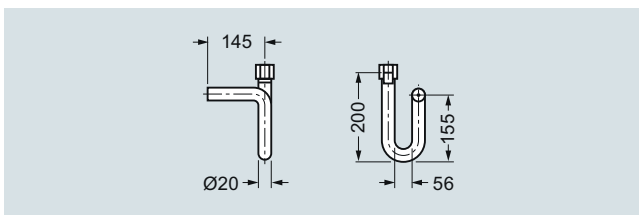
- Copper
- Soft iron
- Stainless steel, mat.-No. 1.4571
- PTFE

7MF9007-7AA**7MF9007-7AB****7MF9007-7AC****7MF9007-7AD**
Accessories

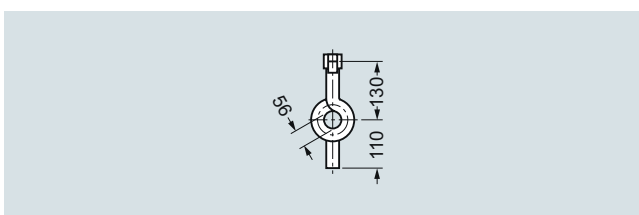
Test report to EN 10204-3.1

7MF9000-8AB

Material acceptance test certificate to EN 10204-3.1

7MF9000-8AD
Dimensional drawings


Water traps, type B, M56340-A0043/-A0061, dimensions in mm



Water traps, type D, M56340-A0045/-A0063, dimensions in mm