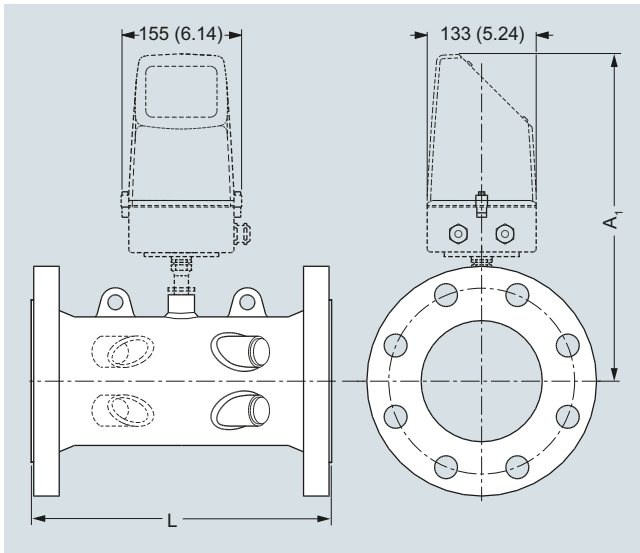
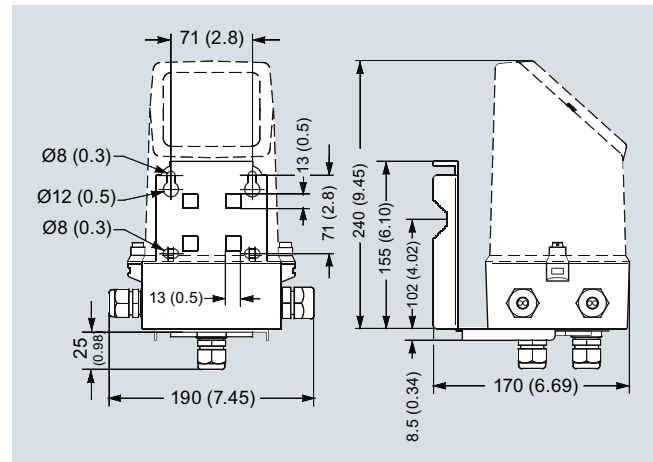


Dimensional drawings



Transmitter IP67/NEMA 4X/6, wall mounting



Dimensions in mm (inch)

Sensor dimensions for FUS380 and FUE380

| Size DN | PN 16 | | PN 25 | | PN 40 | | A ₁ mm | Lift hug |
|------------|------------|--------------|------------|--------------|-----------|--------------|----------------------|----------|
| | L mm | Weight kg | L mm | Weight kg | L mm | Weight kg | | |
| 50 | - | - | - | - | 300 +0/-2 | 10 | 350 | No |
| 65 | - | - | - | - | 300 +0/-2 | 15 | 363 | No |
| 80 | - | - | - | - | 350 +0/-2 | 18 | 370 | No |
| 100 | 350 +0/-2 | 15 | - | - | 350 +0/-2 | 18 | 372 | No |
| 125 | 350 +0/-2 | 18 | - | - | 350 +0/-2 | 24 | 385 | No |
| 150 | 500 +0/-3 | 28 | - | - | 500 +0/-3 | 34 | 399 | No |
| 200 | 500 +0/-3 | 38 | 500 +0/-3 | 47 | 500 +0/-3 | 55 | 425 | Yes |
| 250 | 600 +0/-3 | 60 | 600 +0/-3 | 76 | 600 +0/-3 | 91 | 452 | Yes |
| 300 | 500 +0/-3 | 66 | 500 +0/-3 | 81 | - | - | 478 | Yes |
| 350 | 550 +0/-3 | 94 | 550 +0/-3 | 121 | - | - | 495 | Yes |
| 400 | 600 +0/-3 | 124 | 600 +0/-3 | 153 | - | - | 520 | Yes |
| 500 | 625 +0/-3 | 194 | 625 +0/-3 | 231 | - | - | 570 | Yes |
| 600 | 750 +0/-3 | 303 | 750 +0/-3 | 365 | - | - | 622 | Yes |
| 700 | 875 +0/-3 | 361 | 875 +0/-3 | 553 | - | - | 673 | Yes |
| 800 | 1000 +0/-3 | 494 | 1000 +0/-3 | 770 | - | - | 724 | Yes |
| 900 | 1230 +0/-6 | 535 | 1300 +0/-6 | 835 | - | - | 775 | Yes |
| 1000 | 1300 +0/-6 | 594 | 1370 +0/-6 | 1000 | - | - | 826 | Yes |
| 1200 | 1360 +0/-6 | 732 | - | - | - | - | 928 | Yes |

Notes:

- Weight for transmitter/electronics 1.5 kg (compact version) or approximately 3 kg (remote version including 10 m cable set)
- - Means not available
- All weights are **approximate**
- For flange values - see norm EN 1092-1

Flow Measurement

SITRANS F US Inline

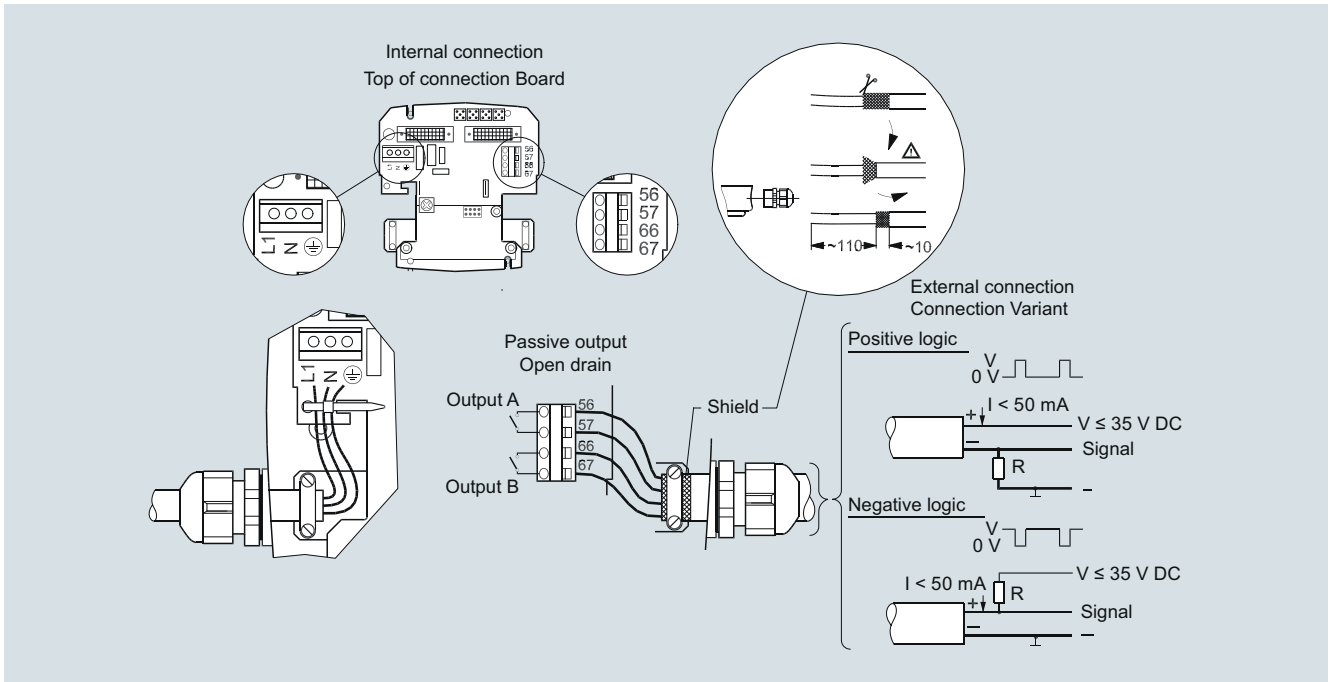
Flowmeter SITRANS FUS380 and FUE380

| Size inch | PN 16 | | PN 25 | | PN 40 | | A ₁ inch | Lift hug |
|--------------|----------------|--------------|----------------|--------------|----------------|--------------|------------------------|----------|
| | L inch | Weight lb | L inch | Weight lb | L inch | Weight lb | | |
| 2 | - | - | - | - | 11.81 +0/-0.08 | 22 | 13.78 | No |
| 2½ | - | - | - | - | 11.81 +0/-0.08 | 33 | 14.30 | No |
| 3 | - | - | - | - | 13.78 +0/-0.08 | 40 | 14.57 | No |
| 4 | 13.78 +0/-0.08 | 33 | - | - | 13.78 +0/-0.08 | 40 | 14.65 | No |
| 5 | 13.78 +0/-0.08 | 40 | - | - | 13.78 +0/-0.08 | 53 | 15.16 | No |
| 6 | 19.68 +0/-0.12 | 62 | - | - | 19.68 +0/-0.12 | 75 | 15.71 | No |
| 8 | 19.68 +0/-0.12 | 84 | 19.68 +0/-0.12 | 104 | 19.68 +0/-0.12 | 121 | 16.74 | Yes |
| 10 | 23.62 +0/-0.12 | 132 | 23.62 +0/-0.12 | 168 | 23.62 +0/-0.12 | 201 | 17.80 | Yes |
| 12 | 19.68 +0/-0.12 | 146 | 19.68 +0/-0.12 | 179 | - | - | 18.82 | Yes |
| 14 | 21.65 +0/-0.12 | 207 | 21.65 +0/-0.12 | 267 | - | - | 19.49 | Yes |
| 16 | 23.62 +0/-0.12 | 273 | 23.62 +0/-0.12 | 337 | - | - | 20.48 | Yes |
| 20 | 24.61 +0/-0.12 | 428 | 24.61 +0/-0.12 | 509 | - | - | 22.45 | Yes |
| 24 | 29.53 +0/-0.12 | 668 | 29.53 +0/-0.12 | 805 | - | - | 24.49 | Yes |
| 28 | 34.45 +0/-0.12 | 796 | 34.45 +0/-0.12 | 1246 | - | - | 26.50 | Yes |
| 32 | 39.37 +0/-0.12 | 1089 | 39.37 +0/-0.12 | 1698 | - | - | 28.51 | Yes |
| 36 | 48.43 +0/-0.24 | 1179 | 51.18 +0/-0.24 | 1841 | - | - | 30.52 | Yes |
| 40 | 51.18 +0/-0.24 | 1310 | 53.94 +0/-0.24 | 2205 | - | - | 32.52 | Yes |
| 48 | 53.54 +0/-0.24 | 1614 | - | - | - | - | 36.54 | Yes |

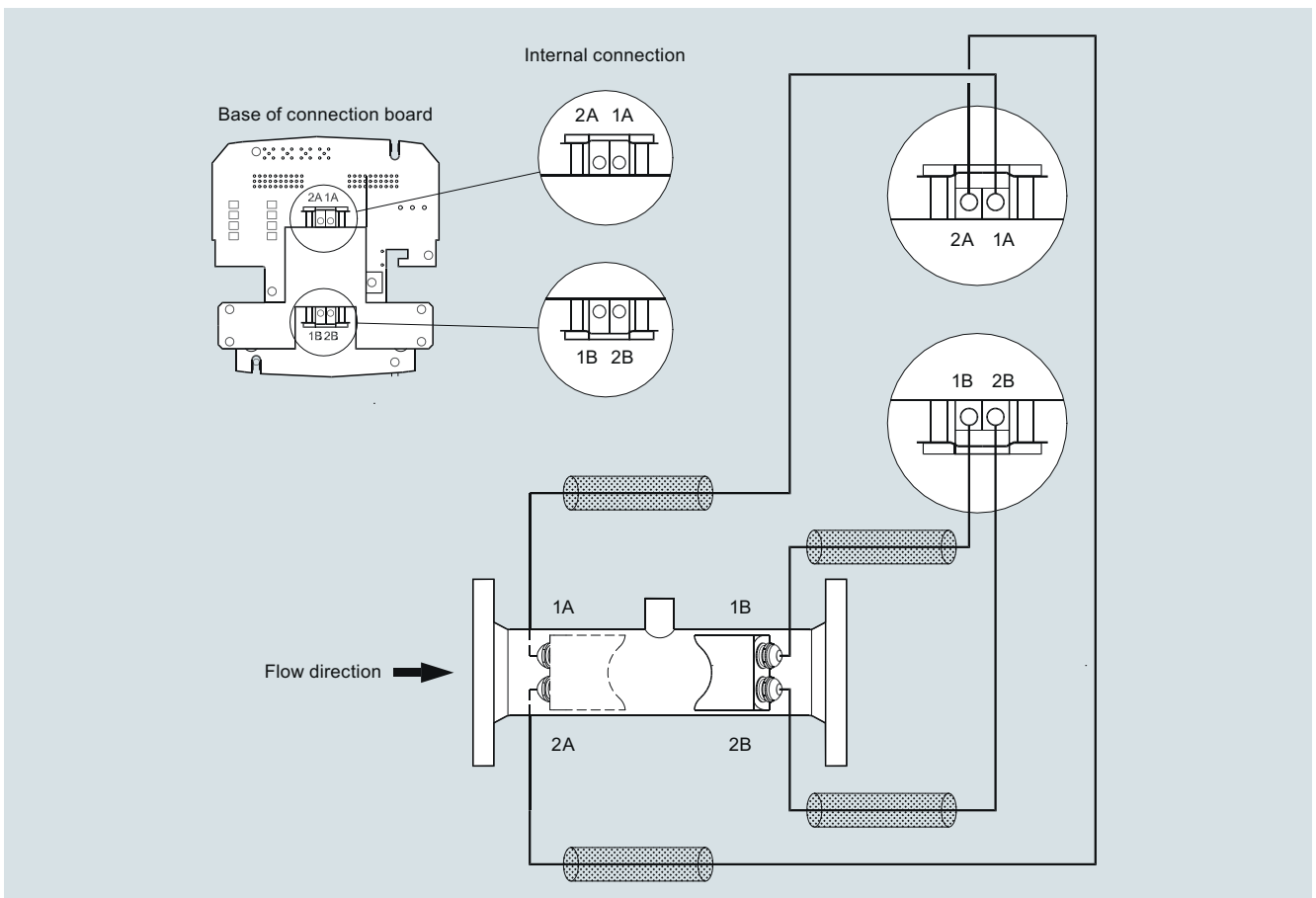
Notes:

- Weight for transmitter/electronics 3.3 lb (compact version) or approximately 6.6 lb (remote version including 32.8 ft cable set)
- - Means not available
- All weights are **approximate**
- For flange values - see norm EN 1092-1

Schematics



Electrical connection of transmitter SITRANS FUS/FUE380



Electrical connection of sensor SITRANS FUS/FUE380